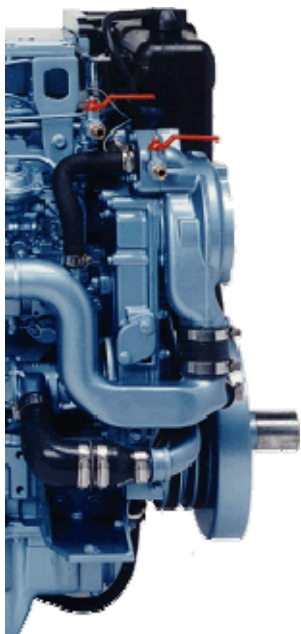


Specifications - M215C



Engine Configuration: 6 cylinder, in-line vertical, 4 stroke, water cooled

Aspiration: Wastegated turbocharger, charge air cooled

Bore / Stroke: 100mm (3.94in) x 127mm (5.00in)

Displacement: 6.00 litres (365.0 cu.in.)

Combustion system: Quadram Direct Injection

Compression ratio: 16.0:1

Engine Rotation: Clockwise viewed from front

Fuel Injection Equipment: Bosch rotary with boost control and electric stop solenoid

Governing: Mechanical

Continuous Engine Operating Angles: 20° engine front up

8° engine front down
30° sideways

Power Take Off: Available from front end drive (for drive limitations refer to Sabre Engines Ltd.)

Weight (Wet):

- 609 kg (1342 lb) engine only
- 683 kg (1505 lb) with ZF Hurth HSW 630A gearbox
- 709 kg (1562 lb) with Twin Disc MG5050SC gearbox

Basic Dimensions

